



Asphalt Dashboard

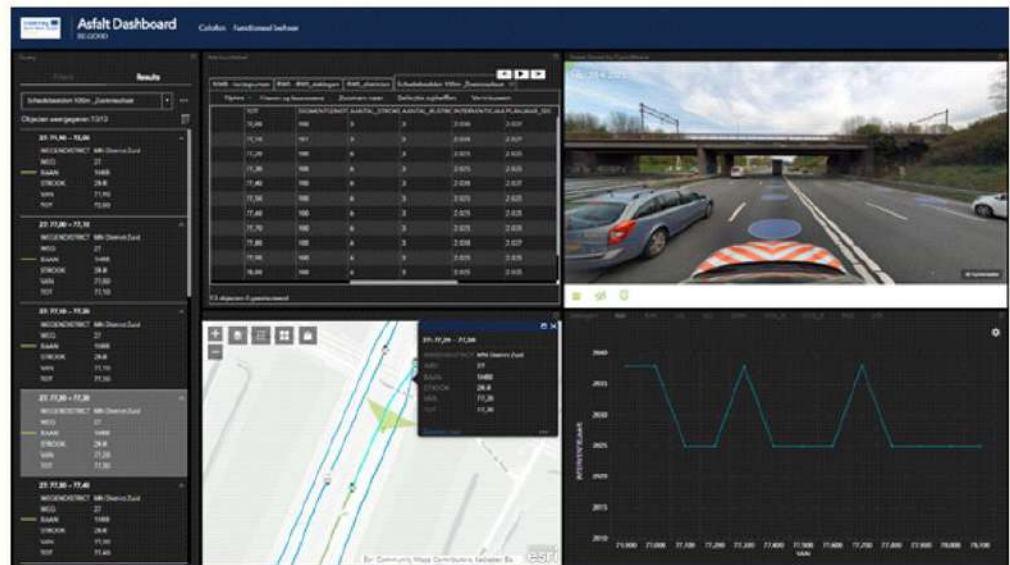
"Our asphalt dashboard provides a flexible overview of road condition data"

Short description

- **Handling data** of international partners
- **Inventorising** partners' relevant data sets
- **Adapting** the existing dashboard
- **Elaborating** on other presentation modes

Features

- The dashboard presents data sources in **four data screens** and a **data query screen**.
- The dashboard combines **two dataset types: georeferenced data and linear-referenced data.**
- **Foundation of a structural status index: analysis of georeferenced data combined with other data sets**



Benefits

- A powerful **overview** tool
- **Comparing** and **analysing** data
- User data **comparison**
- **Combination** of different data sets
- **Open-source** and **flexible**

Limitations

- Managing many data: **time consuming**
- **Analog** measurements
- Inhomogeneity affects **preciseness** of aggregation
- Data and architectural standards **challenge design** process



Applicability

The dashboard will be available to all partners

Transnational and cross domain potential

Large potential for use: asphalt is everywhere

Position on the data enrichment cycle

Data monitoring

The dashboard presents results of data capturing and analysis as input for decision making

