

Urban Re-Development | Trade Mission to Amsterdam
| BUILDING & INFRASTRUCTURE TECHNOLOGY CLUB
11 September 2024



Rijkswaterstaat
Ministry of Infrastructure
and Water Management

Interreg



Co-funded by
the European Union

North-West Europe

BEPROACT

Building an Ecosystem to PROACTively
develop data-driven asset management

- Built environment
- Highway pavement
- Bridge infrastructure
- Intelligent transport system
- Water system
- Waste water treatment



Innovation
and resilience



11 partners from BE, DE, FR, IE, LU and NL
Cooperating from 2023 - 2027

EU funding
€6,1 million

Total project budget
€10,2 million

Objectives

BEPROACT aims to revolutionize critical infrastructure by transforming it into 'talking assets'. This innovative approach will equip organizations with the means to assess the health status of infrastructural assets more accurately. This improves maturity and decision making in Asset Management. And prolong these assets' lifespan, preventing failure, upgrade the profession of maintenance engineers and ultimately reducing maintenance costs.

beproact.nweurope.eu



Leadpartner: Rijkswaterstaat
Project management
Raymond Feron & Natalie Oonk



BEPROACT Partners

Interreg  Co-funded by the European Union
North-West Europe

BEPROACT



Associated
Partners



Goals & main outputs

BEPROACT

BEPROACT: providing innovative transnational solutions to address the urgent common challenges faced of “Aging critical Infrastructure”.

SMART Strategy

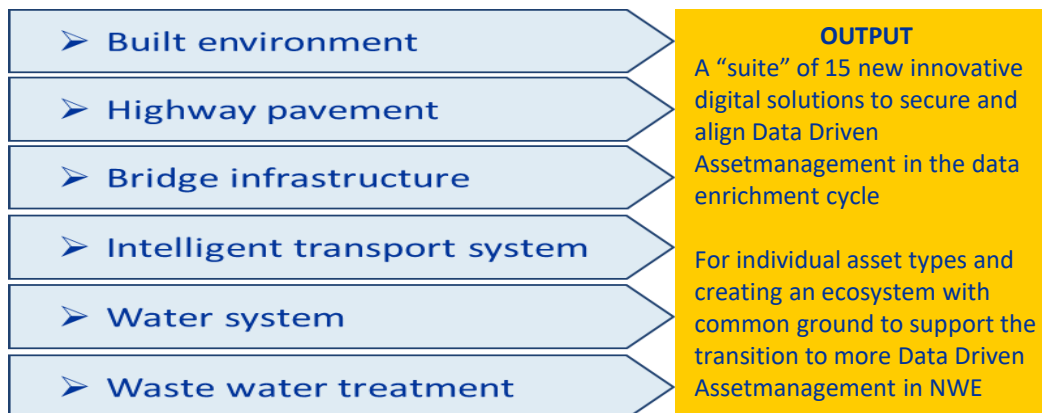
- how to transform to more pro-active and Data driven Asset Management

SMART Assets

- a “suite” of solutions to support organisations to improve asset management of their individual asset types.

SMART People

- open and re-usable knowledge products and training material to increase human capital



BEPROACT:
full coverage of regional
as well as national/cross-
border infrastructure.

SMART STRATEGY & SMART PEOPLE

WP 1: SMART STRATEGY

CURRENT STATE
Assetmanagement

Joint Strategy
development

Transnational,
regional & cross
sector
requirements

Benefits &
value
calculation

Business
Transformation
Framework

Asset
management
MODELS

Implementation
STRATEGY (organisation
&
assets types)

FUTURE STATE

More Data driven
Assetmanagement

WP 3: SMART PEOPLE

Training
schemes

Digital Transformation &
digital expertise built up

Knowledge products
& user manuals

TRAINING
„see what can be done
SMART“

Boost Stakeholder
Readiness Level

Human capital
built up

HUMAN CAPITAL

Ready for Data
driven Asset
management

BEPROACT Roadmap

Action plan for pilot case development

Interreg



Co-funded by
the European Union

North-West Europe

BEPROACT

➤ Built environment

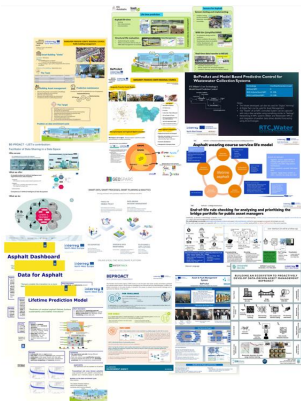
➤ Highway pavement

➤ Bridge infrastructure

➤ Intelligent transport system

➤ Water system

➤ Waste water treatment



Definition of new data driven services

- Pilot case project plans
- Co-creation workshops
- Requirements & scope
- Pilot case posters & pitches
- Partner & ecosystem MAP

Development Proof of Concept Minimal Viable Product

- Transnational cooperation
- Co-creation workshops
- Business case
- Demonstration & round table events
- Diary of successful demo's

Test & Validate In real life conditions at Asset location

- Implementation strategy
- Cross domain and transnational potential
- Business model for uptake
- Training material for upskilling
- Apply stakeholder readiness tool
- Roadshow & pilot trainings

OUTPUT

A "suite" of 15 new innovative digital solutions to secure and align Data Driven Assetmanagement in the data enrichment cycle

For individual asset types and creating an ecosystem with common ground to support the transition to more Data Driven Assetmanagement in NWE

Communication and ecosystem development

2023

2024

2025

2026

2027

BEPROACT

Interreg



Co-funded by the European Union

North-West Europe

BEPROACT

WP1 Maturity Assessment

WP2 Best practices for implementation and training (Demo sessions, expert communities)

WP1 higher maturity of the organization

WP3 Organisation is ready for more data driven asset management with new skills

- > Built environment
- > Highway pavement
- > Bridge infrastructure
- > Intelligent transport systems
- > Water system
- > Waste water treatment

Training Recipients & co-creation

Pilot case DEMO sessions

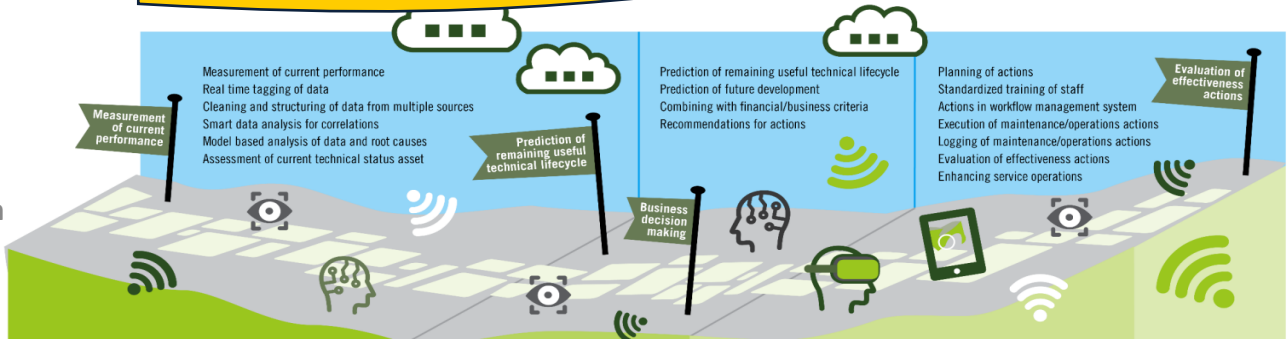
Training material & online user manuals

Pilot trainings for upskilling

Expert communities & groups

WP2 "Toolbox" with 15 pilot case services and knowledge products for 6 asset types, supported by user manuals and training material.

Measurement and prediction of technical lifetime



Projection on organisation and human resources

SMART DATA analysis SMART WORK planning SMART PEOPLE evaluation SMART BUSINESS

The data-enrichment cycle

Pilot portfolio & cross domain themes



- Pilot case (s) Asset type Built environment
- Pilot case (s) Asset type Highway pavement
- Pilot case (s) Asset type Bridge infrastructure
- Pilot case (s) Asset type Intelligent Transport system
- Pilot case (s) Asset type Water system
- Pilot case (s) Asset type Waste water treatment

- Joint strategy development
- Machine learning
- Drones: inspect, repair, predict
- Training and implementation

BEPROACT

Search for synergies, cross domain or transnational cooperation

- Invitation for follow-up with 1 or more partners, e.g. specific pilot case
Demo sessions or cross domain working group on Machine Learning and Drones
 - Invitation to roadshow in 2025/2026
 - ???
-

Interreg



Co-funded by
the European Union

North-West Europe



Thank you

Pilot case definitions

BEPROACT

Built Environment (A.2.2)
Definition of new service

Pilot Solution: Smart building management platform to centrally monitor buildings, analyze data and define predictive maintenance plans to optimize energy use, costs and user experience. The solution will comprise the following services: 1) remote monitoring of technical infrastructure and equipment, 2) Energy consumption dashboard, 3) vehicle movement tracker and 4) room occupancy detection. The solution will be tested on one representative building (Viotte).

Highways (A.2.3)
Definition of new service
More details on next page

Pilot solutions (5x)

1. Lifetime model for residual lifetime a) top layer b) structural layer capacity
2. Sensors for a) surface and course layers b) detection of heavy goods based on weight in motion
3. Dashboard for decision support a) multiyear maintenance planning of pavement replacement, b) prediction of short term surface damages and c) warranty checking and register.

Bridge Infrastructures (A.2.4)
Definition of new service

Pilot solution: Rapid, Accurate, Explainable Bridge Portfolio Analysis. Development of a rule checking model for assisting the prioritization process of Rijkswaterstaat. The model will be developed as Proof of Concept for a selected bridge type and run on a number of bridges, with rule checking, critical objects and underlying reasons. In later phase the POC can be presented to other partners and other asset types.

Intelligent Transport Systems (A.2.5)
Definition of new service

Pilot solution: Dynamic fault assessment of the DCC Asset & Fault Management System (AFMS). The AFMS contains hundreds of ITS assets on the streets of Dublin. It is a real time data driven fault management system, connecting faults with the appointed contractors. Newly developed services are: 1) Data analysis of snapshots of the AFMS to identify patterns, trends and anomalies, 2) develop and train Machine Learning models to predict faults, maintenance needs and lifecycle stages of assets, 3) Generate actionable insights to make informed decisions in Asset management and prioritise resource allocation, 4) Implement a predictive maintenance system to optimize & reduce downtime.

Water system (A.2.6)
Definition of new service

Pilot solution: Advanced methodology, technology and data-driven services, hence a data-driven asset management approach, in order to operate the MPS more effectively and efficiently while safeguarding the water system. Our final goal is to monitor and safeguard surface water quality with a data-driven approach with three new services: 1) Deploying a smart dynamic alert system, 2) Tracing pollution source in case of a critical alert, both upstream and downstream, 3) Optimizing the lifetime of the multi parameter probes.

Waste water system (A.2.7)
Definition of new service

Pilot solution: Advanced Asset management in sewage system using data mining, parameter evaluation and reporting. The following new services will be developed: 1) "low level" parameter evaluation and reporting, pump and valve performance, comparisons between set-points and realized actions, 2) "Intermediate level" parameter evaluation and reporting, infiltration rates, wastewater generation per population per structure, 3) "High level" parameter evaluation and reporting, load calculations from water usage/wastewater production and rain-data.